



King George III.
Bust by Peter Turnerelli (1812)

Be a part of history, today

I want a poor student to have the same means of indulging his learned curiosity, of following his rational pursuits, of consulting the same authorities, of fathoming the most intricate inquiry as the richest man in the kingdom...

Sir Anthony Panizzi (1797–1879), Principal Librarian

This maxim still guides the work of the British Library.

By becoming a British Library Patron, you will have the opportunity to enrich lives, safeguard some of the most important works in history and stimulate new discoveries.

You will also join great bibliophiles such as Sir Hans Sloane, King George III and Sir Joseph Banks whose libraries form our founding collections and, when added to by a strong tradition of acquiring new material, contribute to the unparalleled significance of our holdings.

Become a Patron and make your mark on history.

How your gift can help

The British Library is a valuable asset to the nation, and the world at large.

Every age of civilisation's written and recorded history, and every aspect of human thought is here.

As a charity, we need your generous support to

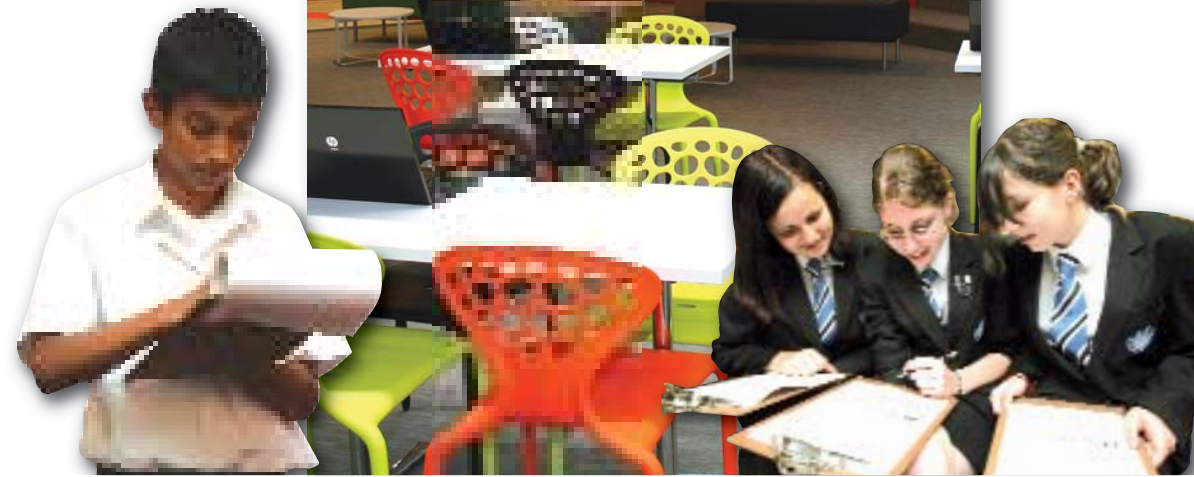
- Acquire valuable items for our collections
- Conserve our holdings, which date from 300BC
- Share our collections with the public through workshops, lectures, exhibitions and the web

As a Patron, you will support the work of individuals, be they scholars, family historians, entrepreneurs, graduates or school children, as they explore our unrivalled collections and generate new ideas.

Recent projects supported by British Library Patrons are outlined on the following pages.

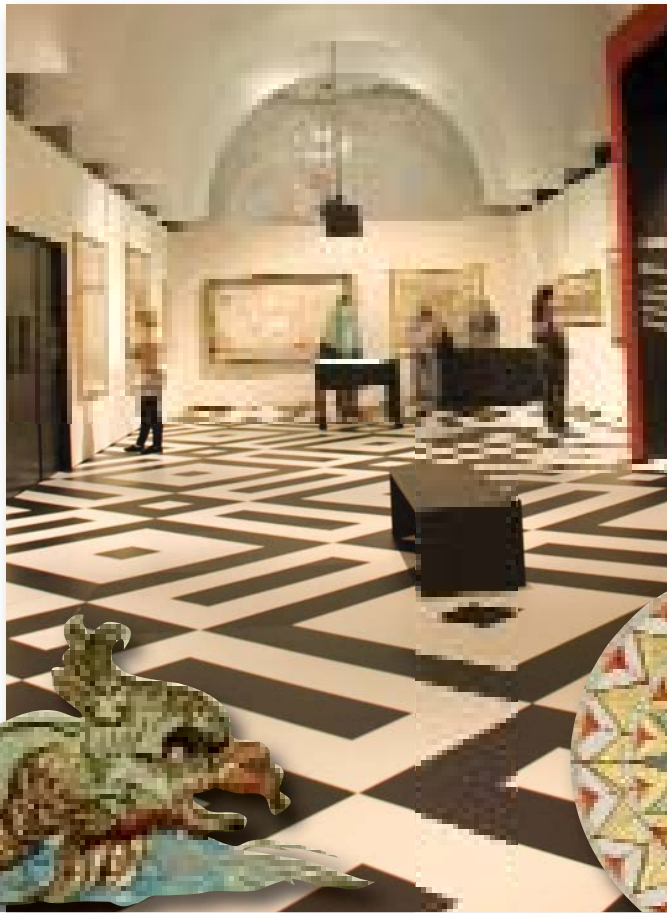
Major new facility: The Harry M Weinrebe Learning Centre

- Patrons contributed to this vibrant space where children can interact with the Library's collections
- The Centre also enables the Library to host workshops on key educational skills such as digital literacy
- Thousands more young learners can now visit the Library every year.



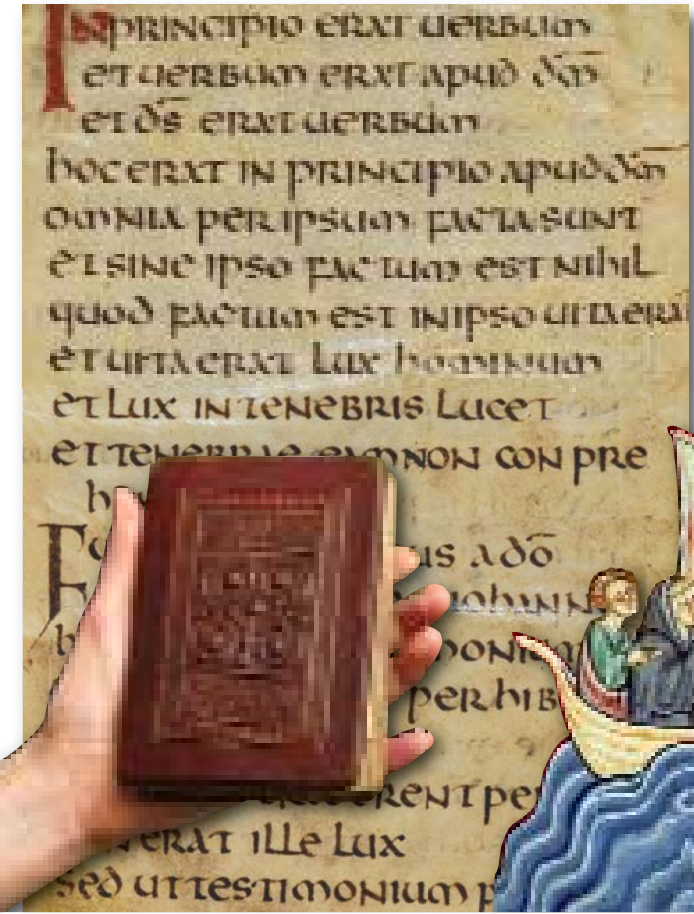
Exhibition sponsorship: 'Magnificent Maps: Power, Propaganda and Art'

- The Library houses the greatest maps collection in the world, and this Patron-sponsored exhibition was an opportunity to display some of the most lavish and exquisite cartographic masterpieces in existence
- The exhibition attracted a record number of 220,000 visitors to the British Library – many of whom were experiencing our collections for the first time.



Acquisition funding: The St Cuthbert Gospel

- This £9 million acquisition project is one of the most significant ever undertaken by the British Library
- The St Cuthbert Gospel is the oldest surviving intact Western manuscript
- It was found buried alongside St Cuthbert in 1104, more than four centuries after its creation
- It has an unassailable place in our cultural history
- Patrons are playing an integral part in the story of this manuscript's remarkable survival.



Where great minds meet

As a Patron, you will enjoy unparalleled access to one of the finest libraries in the world, our experts and a unique series of events.

There are three levels of membership:

- Woolf at £1,500 per annum
- Austen at £5,000 per annum
- Shakespeare at £10,000 per annum.

You will benefit from:

- Private curator-led evenings throughout the year that allow you to walk in the footsteps of Leonardo da Vinci, Charles Dickens, Charlotte Brontë and other great thinkers
- Invitations to our major exhibition openings
- Free entry to all British Library exhibitions
- Visits to private libraries and art collections
- 10% discount in our Shop
- A complimentary British Library publication
- Annual updates from our Chief Executive on Library news and activities
- An acknowledgement in our Annual Report.

In addition Austen and Shakespeare Patrons will receive:

- A second Library publication
- A behind-the-scenes tour of the British Library

At the highest level, Shakespeare Patrons will have:

- A plaque bearing your name on a Reading Room chair
- The opportunity for you and your guests to enjoy lunch with our Chairman
- A third complimentary publication.

Young Patrons' Programme

We are now offering Patron membership for those in their 20s and 30s, who are committed to supporting the work of the Library.

For just £500 per annum, Wilde Patrons will enjoy:

- A private view of the collections with one of our curators
- The opportunity to participate in various talks, readings and debates
- An invitation to an exhibition launch event
- Two complimentary tickets to the Library's major exhibitions for the year.

Contact us at supporters@bl.uk for more information on Young Patrons.



Payment Details

Woolf Austen Shakespeare

Cheque or Credit Card

Cheque/CAF Cheque (made payable to The British Library) Visa/Mastercard/Amex
(delete as appropriate)

Card Number

Expiry Date

/

For American Express, please quote the four digit number which appears above the account number

Expiry Date

/

Three digit security number from reverse of card

Name of Card Holder

Signature

Date

Maximising the value of your gift to the British Library

If you are a UK tax payer, signing the Gift Aid Declaration overleaf adds to the value of your donation, at no extra cost to you.

Levels	When Gift Aid added	Value when tax relief also added by donor*	
Woolf	£1,812.50	At 40% – £2,125.00	At 50% – £2,281.25
Austen	£6,150.00	At 40% – £7,300.00	At 50% – £9,025.00
Shakespeare	£12,382.50	At 40% – £14,765.00	At 50% – £15,956.25

*As a higher rate tax payer you can supplement the value of your gift even further by directing the tax relief on your Self Assessment form to the British Library.

Gift Aid Declaration

By signing this Gift Aid Declaration, you will enable the British Library to reclaim the tax that you have already paid on your gift. This will apply to gifts of any size.

I would like the British Library to reclaim tax on all donations I make from the date of this declaration, until I notify you otherwise.

Signature

Date

Notes

- 1 You can cancel this declaration at any time by notifying the British Library.
- 2 You must pay an amount of income tax and/or capital gains tax at least equal to the tax that the British Library reclaims on your donations in the tax year (currently 25p for each £1 you give).
- 3 If in the future your circumstances change and you no longer pay tax on your income and capital gains equal to the tax the British Library reclaims, you can cancel your declaration (see note 1).
- 4 If you pay tax at the higher rate you can claim further tax relief in your Self-Assessment tax return.
- 5 If you are unsure whether your donations qualify for Gift Aid tax relief, please contact the Development Office of the British Library. Alternatively, you should contact your local tax office for leaflet IR113 Gift Aid.
- 6 Please notify the British Library if you change your name or address.

US tax-payers can make their gift tax-deductible through the Library's registered 501(c)(3), a not-for-profit organisation. For further details, please call the Development Office on +44 (0)20 7412 7205.

* The value of the benefits received has been calculated as £470 (Shakespeare), £400 (Austen) and £250 (Woolf). Payment above this amount will be treated as a voluntary donation which is eligible for tax relief under the Gift Aid scheme.

What happens next?

Please return your completed form via Freepost to:

Patrons Manager
The British Library
FREEPOST WC4452
London NW1 4YD
T +44 (0)20 7412 7205
patrons@bl.uk

You will then receive a letter of acknowledgement and your membership pack.